

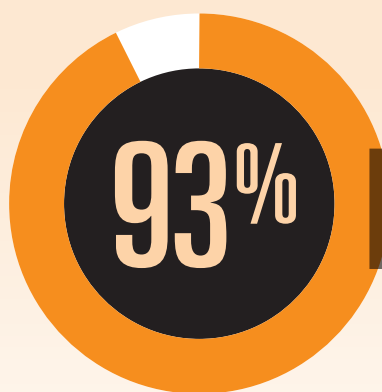
SAFETY ON THE ROADS: TRUCK DRIVERS SPEAK OUT

Following a spate of fatal crashes involving trucks in NSW, a police operation targeted truck drivers under the premise that the fines they delivered were about improving safety on the roads. The TWU surveyed over 1,000 truck drivers – 1 in 5 owner drivers - to find out what's really causing these crashes.

“

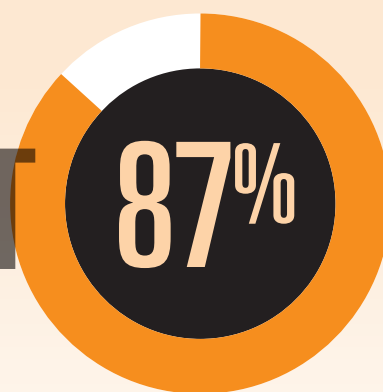
It is a pity they do not target the entire supply chain from producers right through to the retail sales and have a good look at the unreasonable pressures and work conditions that they place upon drivers. These include large breaks without pay, not paying award wages, penalties for not meeting deadlines, and not paying proper and fair shift penalties for weekend/public holiday work.

”



**BELIEVE THINGS
NEED TO CHANGE
IN THE INDUSTRY.**

BUT



**BELIEVE POLICE
OPERATIONS
TARGETING DRIVERS
WILL NOT MAKE THE
ROADS SAFER.**

“

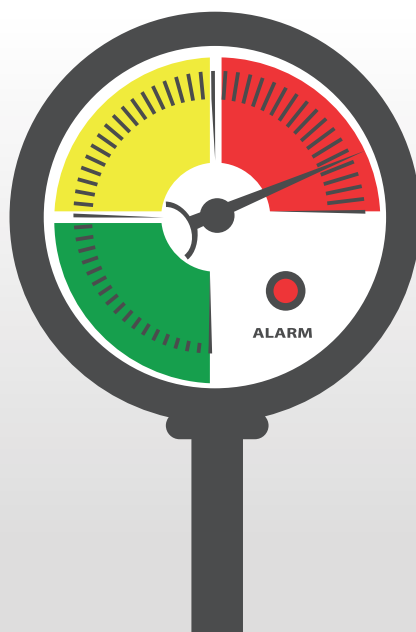
I only get paid by the km so if I have to sit for hours to be able to drop the load off how the hell am I supposed to fit that in a log book or make a living?

”

“

Low wages growth means I have to do more runs to meet the financial needs of my family.

”



93%

**BELIEVE PRESSURE
ON TRUCK DRIVERS
IS CONTINUING OR
HAS GOT WORSE IN
THE LAST YEAR.**

7%

**ONLY
BELIEVE
PRESSURE
HAS
DECREASED.**

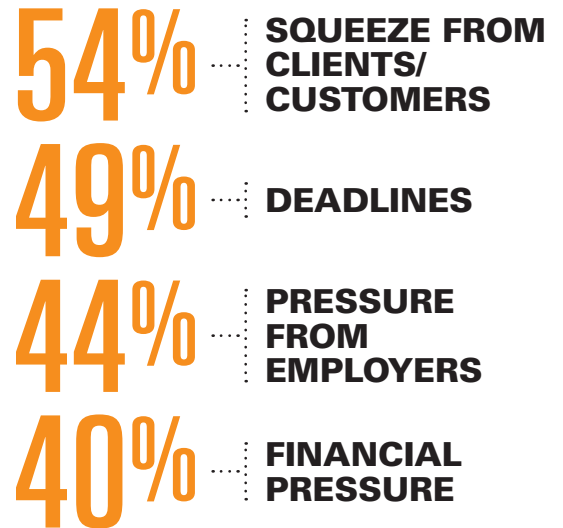
Pressure in the transport industry causes companies and drivers to cut corners in safety in order to compete for business and meet deadlines, often resulting in deadly crashes.



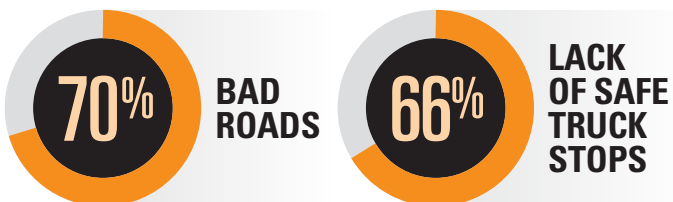
The problems in the industry are a result of rates. It has become dog eat dog, it's a race to bankruptcy. There is undercutting until there are little or no funds for maintenance. Companies are now working on as low as a 1% margin because they have undercut so far.



DRIVERS IDENTIFIED THE TOP CAUSES OF PRESSURE:



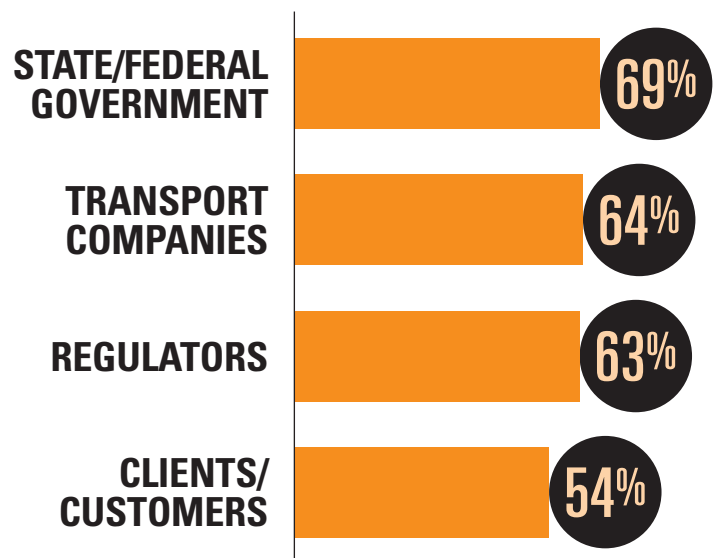
DRIVERS IDENTIFIED OTHER SAFETY ISSUES:



Why are successive governments building sub-standard roads that greatly contribute to many factors including the cause of minor defects, excessive wear and tear not to mention the fatigue this also causes.



DRIVERS BELIEVE RESPONSIBILITY FOR FIXING PRESSURES IN THE INDUSTRY LIES WITH:



TOGETHER, WE ARE STRONGER.

JOIN NOW FOR A BETTER FUTURE.

www.twu.com.au/join



TWU Tony Sheldon P: 02 8114 6500 E: twu@twu.com.au W: www.twu.com.au

